

Installation Guide

Windows 7 Touch Screen Driver

| | |
|----------|-------------|
| Date | 18/08/2010 |
| Revision | 1.0 |
| Author | Next Window |

Table of Contents

| | |
|----------------------------------|----------|
| Introduction | 3 |
| Compatible Products | 4 |
| Installation..... | 5 |
| Manual Installation | 6 |

Introduction

This document describes how to install the Windows 7 Multi-touch driver for NextWindow Products.

The driver is available to download from the NextWindow website at the following location:

http://www.nextwindow.com/nextwindow_support/windriver.html

Compatible Products

Multi touch is only available on Windows Home Premium and above. Please check that you have a multi-touch enabled version of Windows 7 before performing the installation.

This driver will only work with the following NextWindow products. Please check that you have the correct product before proceeding. Should you be unsure of your product model then you should check with your product supplier.

| | |
|------------|--|
| Dell | SX2210T Monitor (1900 Touch Screen) |
| HP | TouchSmart IQ500, IQ800, DX9000, 300, 600, 9100 Series |
| NextWindow | 1900, 2150*, 2700 |

For information on products and versions, see [NextWindow Latest Technical Information](#).

**NextWindow Model 2150 is used in a variety of models from NextWindow Integrators. Verify proper compatibility by checking with your dealer.*

Installation

To install the Windows 7 NextWindow Multi-Touch driver perform the following steps.

1. Download the driver package from the NextWindow website
2. Extract the package to a local folder on your PC
3. Check that the touch panel is connected to your PC (this step is not required for all in one computers)
4. Open the folder you extracted the driver package to in step 2 above and double click install.exe
5. Follow the on screen instructions given by the installer.
6. Once the driver has been installed you should now have multi-touch functionality available.

To check that multi touch is working:

1. Open Microsoft Paint application
2. Place two fingers on the touch panel and drag them across the paint canvas.
3. You should see two lines.
4. If you do not see two lines, please restart your PC and repeat the test.

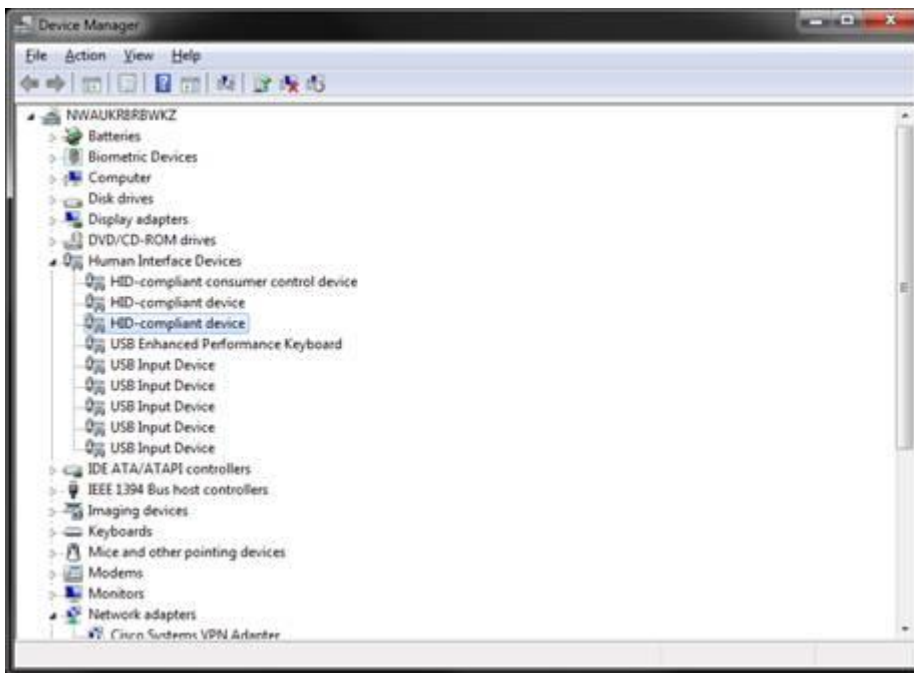
If you are not able to draw two lines simultaneously even after restarting the PC then the driver has not been installed correctly. In this case you can attempt a manual installation (see following section).

Manual Installation

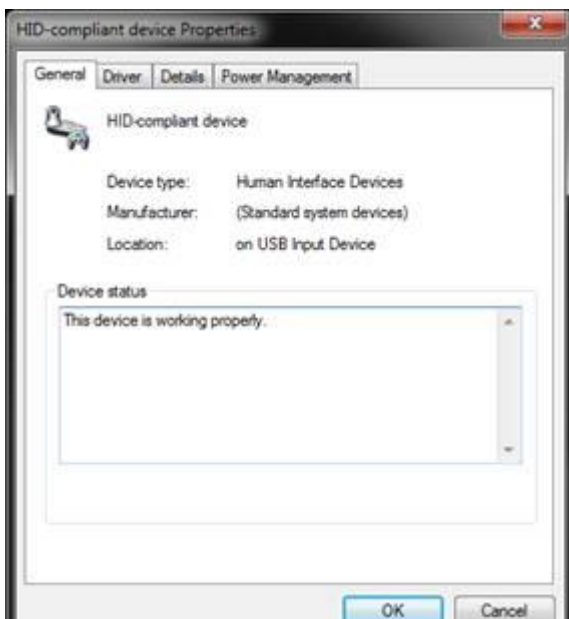
NOTE: Manual Installation should only be attempted if the install application was unsuccessful.

Please read through ALL the instructions before you attempt a manual installation and only proceed once you understand the process thoroughly.

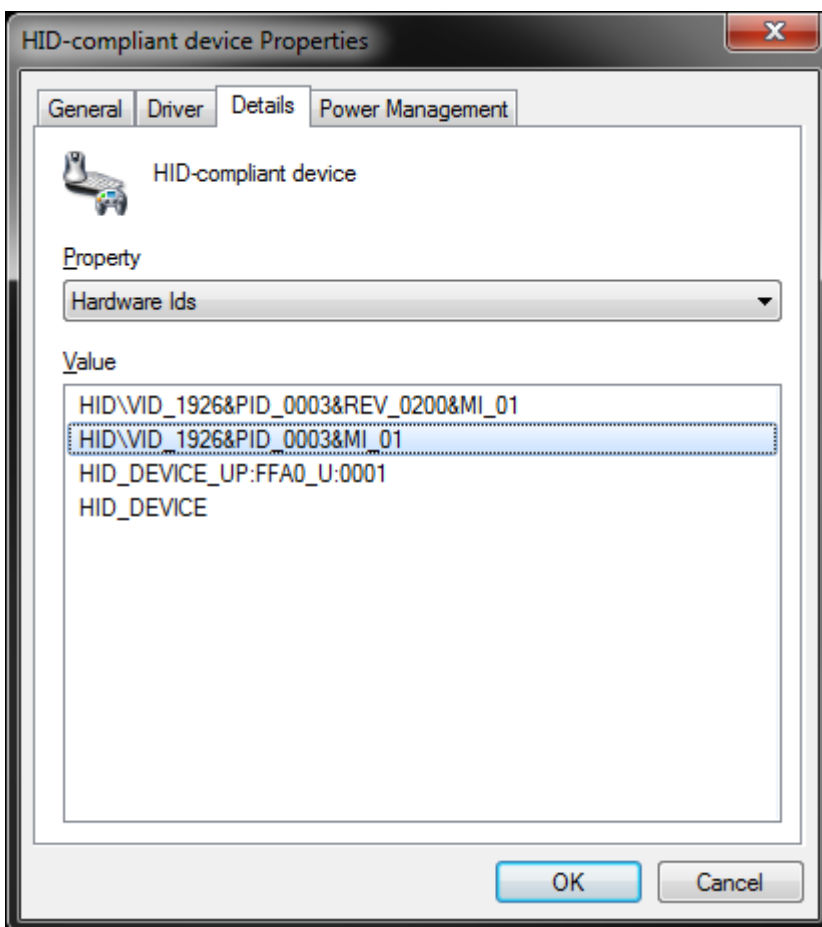
1. Extract the NWFilter.zip to a local folder e.g. C:\Temp\NWFilter\
2. Make sure the touch panel is plugged in.
3. Open Device manager (Control Panel -> view by small icons -> Device Manager) and expand the Human Interface Devices branch of the tree, you should see something similar to:



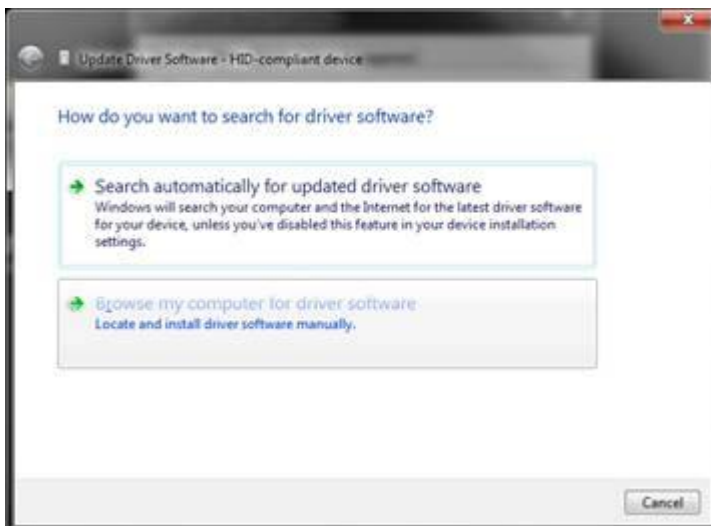
4. You will notice several devices in this list, some will be related to the touch panel and others related to other input devices you have such as mice or keyboards. The next steps are important to follow to make sure you select the correct device.
5. You should see one or more entries for "HID-compliant device" in the list. Start at the first one and double click to open the properties.



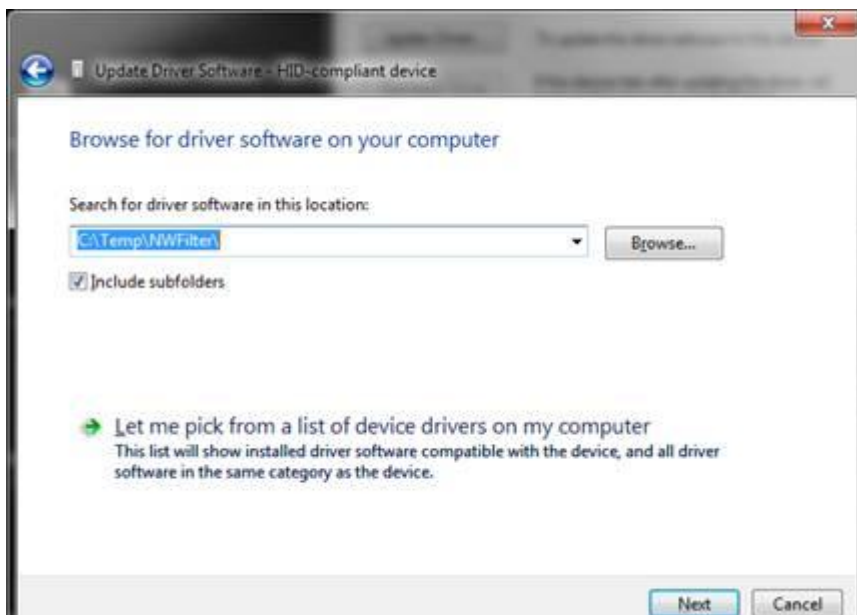
6. To find out if this is the NextWindow device you need to select the details tab and then from the properties drop down select "Hardware Ids"



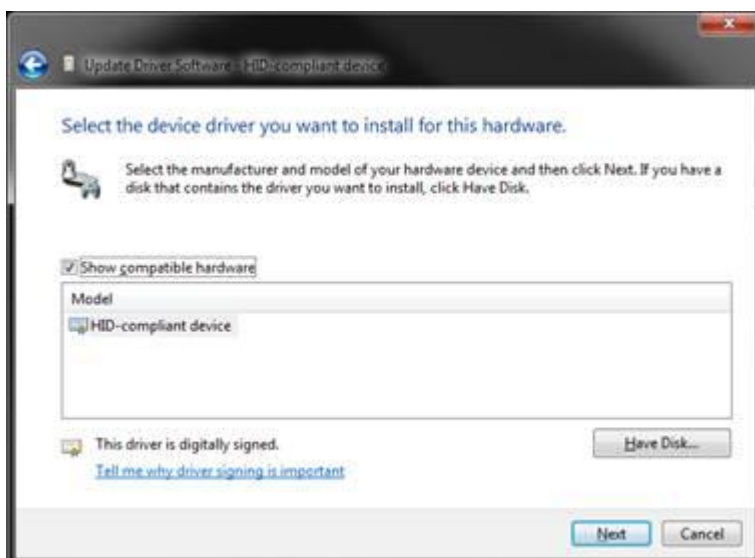
7. Check for the line "HID\VID_1926&PID_0003&MI_01" as you can see above. If there is no matching line then this is the wrong device and you need to return to step 5 this time selecting the next HID-compliant device from the list.
8. Once you find the correct device click the Driver tab in the device properties and select Update driver



9. You will see the update driver prompt above, select browse my computer for driver software



10. Click Let me pick from a list of device drivers on my computer



11. Click Have Disk



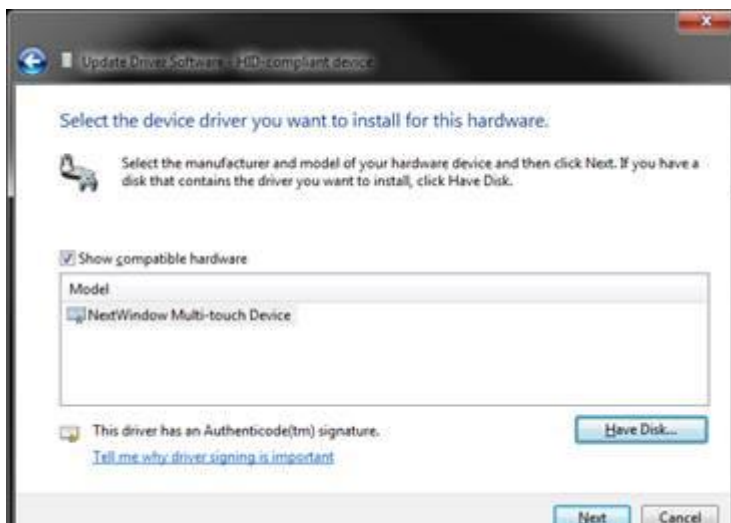
12. Click browse and browse to the folder you extracted NWFilter.zip to e.g. c:\Temp\NWFilter\ if you have a 32bit OS you will need to browse to the i386 folder and select NW1900.inf if you have a 64bit OS you will need to navigate into the amd64 folder and select NW1900.inf from there.



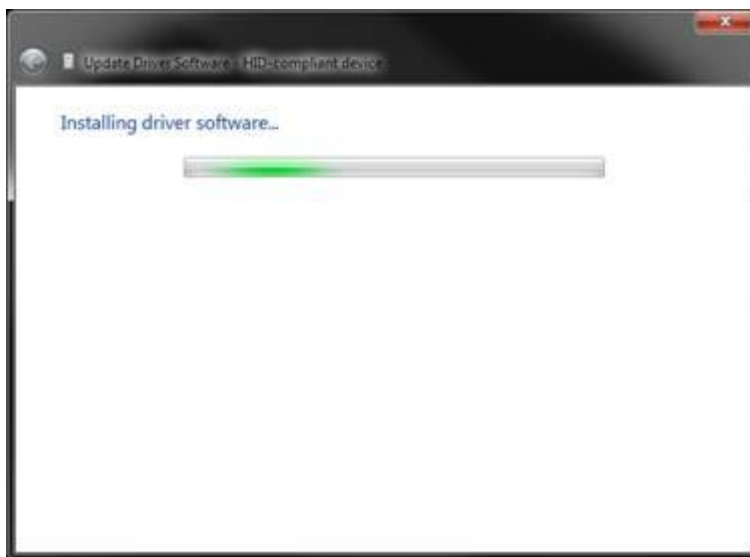
13. Press Open



14. Press OK



15. You should see NextWindow Multi-touch Device displayed in the window. Click Next



16. You should see a dialog saying installing like above, after 20 seconds or so you should see the updated driver successfully message display



Click the close button and test Multi-touch. If it is not working try restarting your PC and check again.